

clear-PEP[®] UV PC stage



PRODUCT DESCRIPTION

Facing sheet on both sides: transparent structured polycarbonate

Core: PC-TRlcore honeycomb



The distinctive TRlcore for our clear-PEP[®] panels is manufactured on our specially designed and patented core expander. The innovative characteristic of the open cell structure gives the lightweight panels not just a unique depth but also an extremely high rigidity.

The 2 mm UV resistant PC-facing sheets with a structured surface on both sides give the panels a translucent appearance and a slip reduced character. It can be used as backlit and suspended flooring.

PROPERTIES

- innovative translucent optics
- unique 3D effects and light scattering
- highly scratch resistant and slip reduced surface
- excellent UV stability
- low weight
- easy processing
- compatibility with common mounting systems
- excellent rigidity
- high impact strength
- slip reduction class R9 according to DIN 51130

DIMENSIONS

Format	Length [mm]	Width [mm]	Thickness [mm]
Standard	2000	1000	40
Special dimensions * **	max. 7800	max. 1420	max. 80

Tolerances	Length [mm]	Width [mm]	Thickness [mm]
Cut to size	+2/-2	+1/-2	+0/-1

*on request - minimum order per special size: 200 m²

**all panels longer than 3020 mm with core joint

GENERAL PHYSICAL PROPERTIES

Coefficient of thermal expansion acc. to DIN 53752-A	Service temperature	Fire class	
[1/K]	[°C]	BS	EN
$6,5 \times 10^{-5}$	-30 to +80	476 Part 7	13501
		2Y	Bfl s1

MECHANICAL PROPERTIES

Thickness [mm]	Weight per unit area [kg/m ²]	Thermal insulation U-value [W/m ² K]	Sound insulation Rw [dB]	Bending stiffness* [Nm ²]
30	9,7	2,4	25	1688
40	9,7	2,1	25	2933

*per 1 m panel width

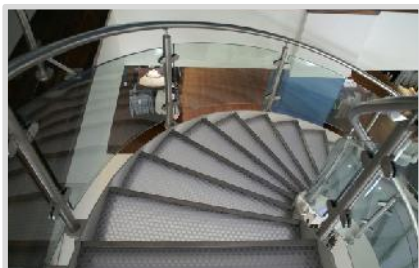
LOAD VALUES

	Support centers 500 mm			Support centers 750 mm			Support centers 1000 mm		
	30	40	50	30	40	50	30	40	50
Thickness in mm									
Deflection in mm, support on 2 sides									
Applied load 2500 N/m ²	1,0	0,6	0,4	4,7	2,6	1,7	14,5	8,1	5,1
Applied load 3500 N/m ²	1,4	0,8	0,5	6,6	3,7	2,4	-	11,3	7,2
Applied load 5000 N/m ²	2,0	1,1	0,8	9,4	5,3	3,4	-	-	-
Deflection in mm, support on 4 sides									
Applied load 2500 N/m ²	0,6	0,5	0,2	1,9	1,1	0,7	4,3	2,5	1,6
Applied load 3500 N/m ²	0,8	0,5	0,3	2,6	1,5	2,0	6,0	3,4	2,3
Applied load 5000 N/m ²	1,2	0,7	0,5	3,8	2,2	1,5	8,6	4,9	3,3

clear-PEP[®] UV PC stage

EXAMPLES OF USE

Stair treads



Illuminated and raised flooring



APPLICATIONS

interior

interior fittings | furniture | floors/walls/ceilings | partition walls/doors | stairs | illuminated elements | retail & booth constructions | corporate design & artistic objects

customized application according our mission The logo for Design Composite, featuring a stylized orange 'd' followed by the text 'your design composite' in a sans-serif font.

For use in damp please contact Design Composite for technical assistance!

All these specifications are based on our most-up-to-date information but are subject to changes at any time. A legally binding assurance of certain properties or the suitability of an individual type for a specific field of application cannot be assumed from these specifications. All information is provided without any obligation. No legal liability can be assumed.